



## Order Form

### SwingRiser (HRG 220) Single Gate Operator

Single post operating a single gate panel from one controller

**A separate order form is required for each unique operator ordered.** If you have multiple identical operators, with NO variances, indicate total quantity here: \_\_\_\_\_

Date: \_\_\_\_\_ Person completing this form: \_\_\_\_\_

Purchase order #: \_\_\_\_\_ Contact phone: \_\_\_\_\_

Contact email: \_\_\_\_\_

End user: \_\_\_\_\_ Job site city: \_\_\_\_\_ State: \_\_\_\_\_

#### SwingRiser (HRG 220) Gate Panel:

Gate Weight: \_\_\_\_\_ lbs Gate Height: \_\_\_\_\_ ft Gate Panel Width (16' max): \_\_\_\_\_ ft


**INSTRUCTIONS:** Check one box within each of the numbered sections below. The Order Form must be fully completed and signed before the order will be processed.

**IMPORTANT:** Gate speed, direction of swing, and degree of swing are fixed and cannot be changed in the field. Operator handing is determined by **STANDING ON THE SECURE SIDE OF THE GATE LOOKING OUT** toward the public side of the gate.

#### 1) Operator Speed:

- SwingRiser 14 (A speed): 14 second open/close cycle, 1,000 lb. gate weight max, 9' gate width max.
- SwingRiser 19 (B speed): 19 second open/close cycle, 1,600 lb. gate weight max, 16' gate width max.
- SwingRiser 30 (C speed): 30 second open/close cycle, 3,000 lb gate weight max, 16' gate width max.



#### 2) UPS Battery Backup:

- UPS Backup 
- No UPS Backup

 - Indicates an additional charge.

### 3) Voltage and Phase:


#### A. Standard AC model, SwingRiser (HRG 220): AC Supply Voltage

- 60HZ:**  115 V 1Ø  208 V 1Ø  230 V 1Ø  208 V 3Ø  230 V 3Ø  460 V 3Ø  575 V 3Ø   
**50HZ:**   110 V 1Ø  220 V 1Ø  220 V 3Ø  380 V 3Ø  440 V 3Ø


#### B. UPS Backup model, 24 VDC, SwingRiser UPS (HRG 220 DC): AC Input Voltage for UPS Backup. Choose voltage with care as chargers are not field convertible. \*115V requires a 30A branch circuit

- 115 V 1Ø 23A\*  208 - 230 V 1Ø 11.5A





### 4) OUTER (square) Post Height:

- 68" (Standard)  
 Custom Height (Specify height on Customized Post Diagram, page 5)   
**Note:** 156" custom height maximum. Outer Post height must be at least 12" shorter than Inner Post





### 5) INNER (round) Post Height:

- 80" (Standard)  
 Custom Height (Specify height on customized requests drawing, page 5)   
**Note:** 168" custom height maximum. Inner Post height must be at least 12" taller than Outer Post

### 6) Hinges:

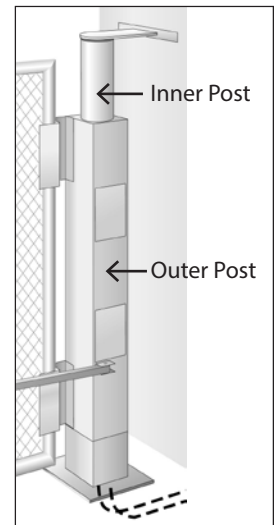
- 2 Hinges in Standard Positions (Standard)  
 2 Hinges, Custom Positions (Specify positions on Customized Post Diagram, page 5)   
 3 Hinges (Specify positions on Customized Post Diagram, page 5)   
 4 Hinges (Specify positions on Customized Post Diagram, page 5)   
 No Hinges 

### 7) Index Arm:

- 1 Index Arm in Standard Position (Standard)  
 1 Index Arm, Custom Position (Specify position on Customized Post Diagram, page 5)   
 2 Index Arms, Custom Positions (Specify positions on Customized Post Diagram, page 5)   
 3 Index Arms, Custom Positions (Specify positions on Customized Post Diagram, page 5)   
 No Index Arm 

### 8) Top Cap Brackets: See drawing on page 4 for details

- 4" Pipe (4-1/2" OD) See restrictions on page 4  6" Pipe (6-5/8" OD)  8" Pipe (8-5/8" OD)  
 Pilaster  6" Square Tube



**REMINDER:** Gate speed, direction of swing, and degree of swing are fixed and cannot be changed in the field. Operator handing is determined by **STANDING ON THE SECURE SIDE OF THE GATE** looking out toward the public side.

- SwingRiser posts have two main configurations, ROLI and RILO. These come in either 90 degree or 100 degree swing.
- ROLI stands for Right Out Left In. If this post is placed on the Right it will Swing Out and if placed on the Left will Swing In.
- RILO stands for Right In Left Out. If this post is placed on the Right it will Swing In and if placed on the Left will Swing Out.
- The Index Arm and access panels will always be located on the secure side

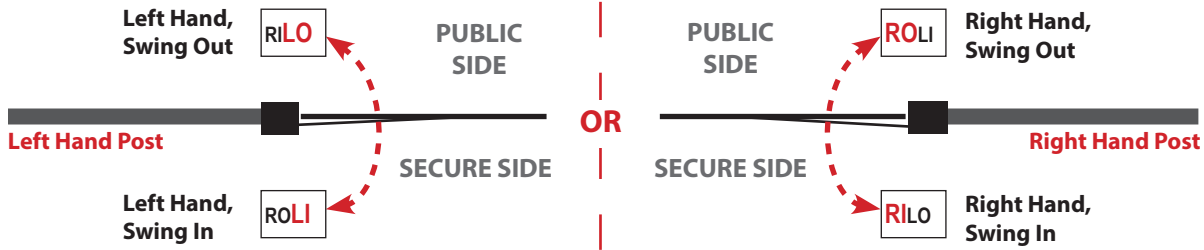
 - Indicates an additional charge.

**9) Degree of Swing:**

- 90° swing (standard)       100° swing

**10) Gate Handing for the SwingRiser (HRG 220):**

- Left hand, swing out       Right hand, swing out  
 Left hand, swing in       Right hand, swing in



**11) Lock (pin and receptacle):**

- Ground Lock       Post Lock

**12) Heater:**

- Yes (Heater voltage will match Operator voltage)        No

**13) Radio Receiver:**

- Single Channel Open       No Radio Receiver

**Hoses:**

Hoses are ordered on a separate order form. In most installations, the hose order is placed after the operator is installed to ensure that hose lengths are accurate.

SwingRiser (HRG 220) price includes up to 50 ft (15 m) of 1/4 inch hydraulic hose (custom cut to size to installer's field measurements). Two hoses are pre-filled with hydraulic fluid and supplied with quick disconnects. Submit completed and signed operator and hose order forms with each order. Additional hose is billed by the foot. **We will invoice for any hose over the included length of hose.**

**Double check that one box within each of the numbered sections above has been checked. Page 5 must be included if your order contains customizations. The Order Form must be fully completed and signed before the order will be processed.**

**It is the responsibility of the customer to verify that the information on this order form is accurate. All custom orders are non-returnable.\***

Date: \_\_\_\_\_ Person completing this form: \_\_\_\_\_

Operator invoice # \_\_\_\_\_ or Operator PO # \_\_\_\_\_

Ship To Company: DF Supply, Inc.

Address: 8500 Hadden Rd.

City, State, Zip: Twinsburg, OH 44087

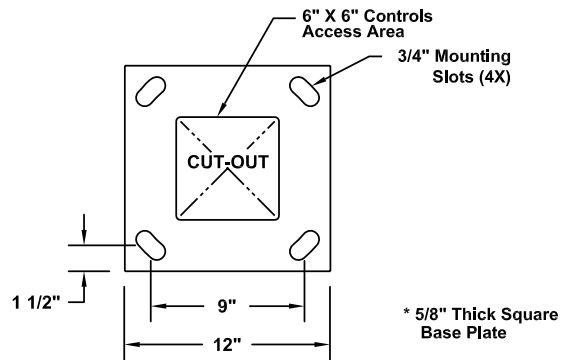
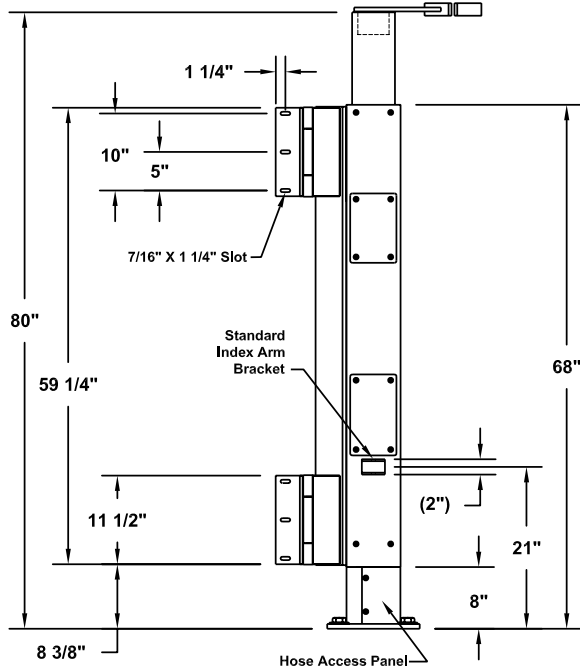
 - Indicates an additional charge.

# SwingRiser™ Reference Information

Note: All Lateral Forces Must Be Supported By Backing Post / Pilaster.

## Standard Operator Configuration / Dimensions

Right Hand Post Shown - Left Hand Post Is Mirror Image

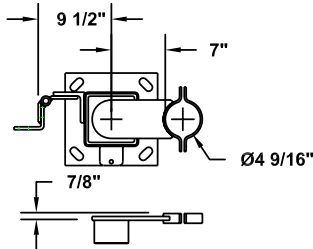


## Baseplate / Footprint Dimensions

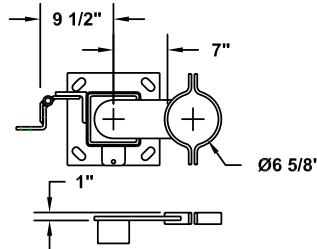
## Top Cap Options

### 4" Pipe Bracket

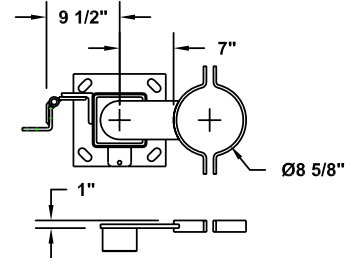
Use Restricted To 1000 LB, 12' Long Gate Panels Max.



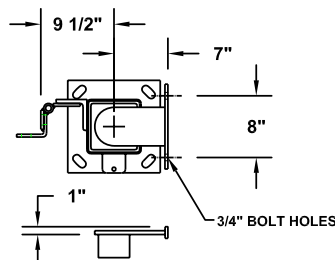
### 6" Pipe Bracket



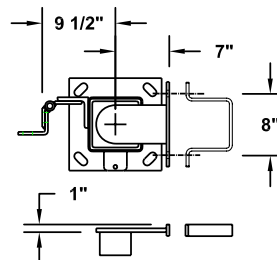
### 8" Pipe Bracket



### Pilaster Bracket



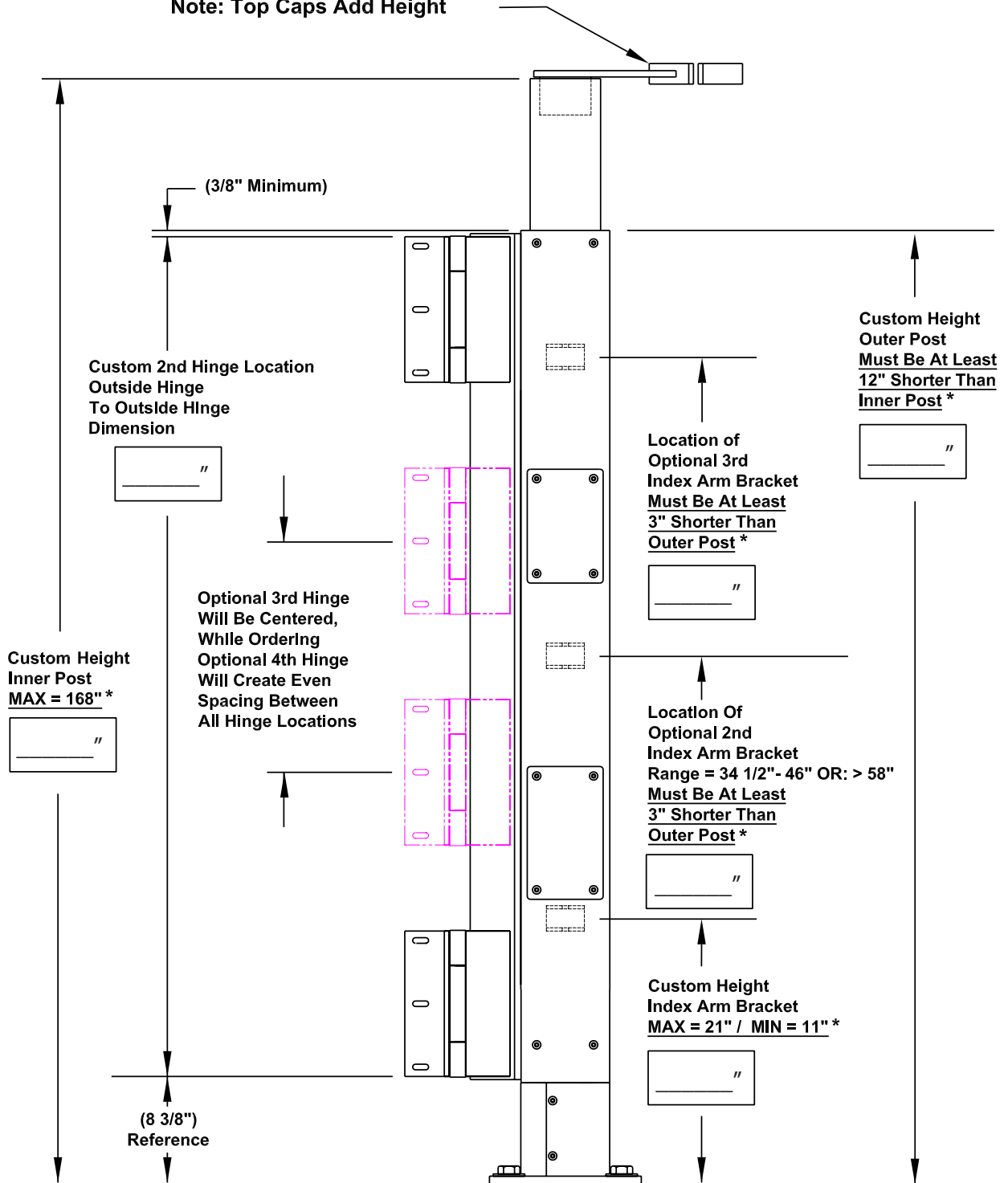
### 6" Sq Tube Bracket



# Customized SwingRiser™ Post

Note: All Lateral Forces Must Be Supported By Backing Post/Pilaster

Note: Top Caps Add Height



\* Important Minimum Or Maximum Dimension