

SlideDriver™— Optional Snow Kits

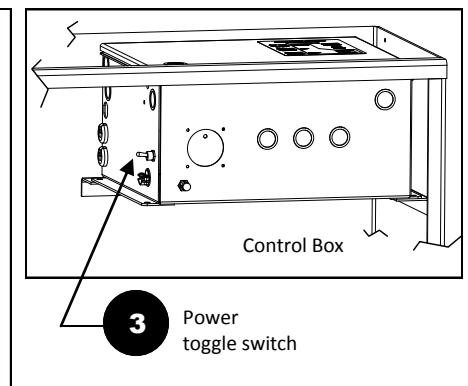
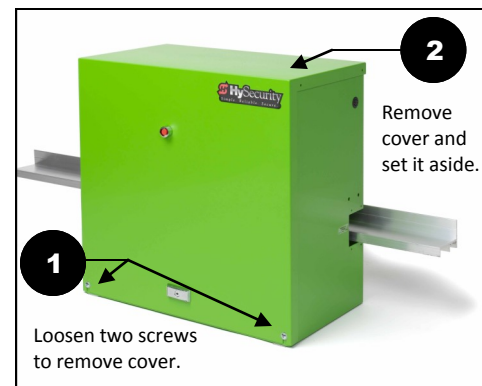
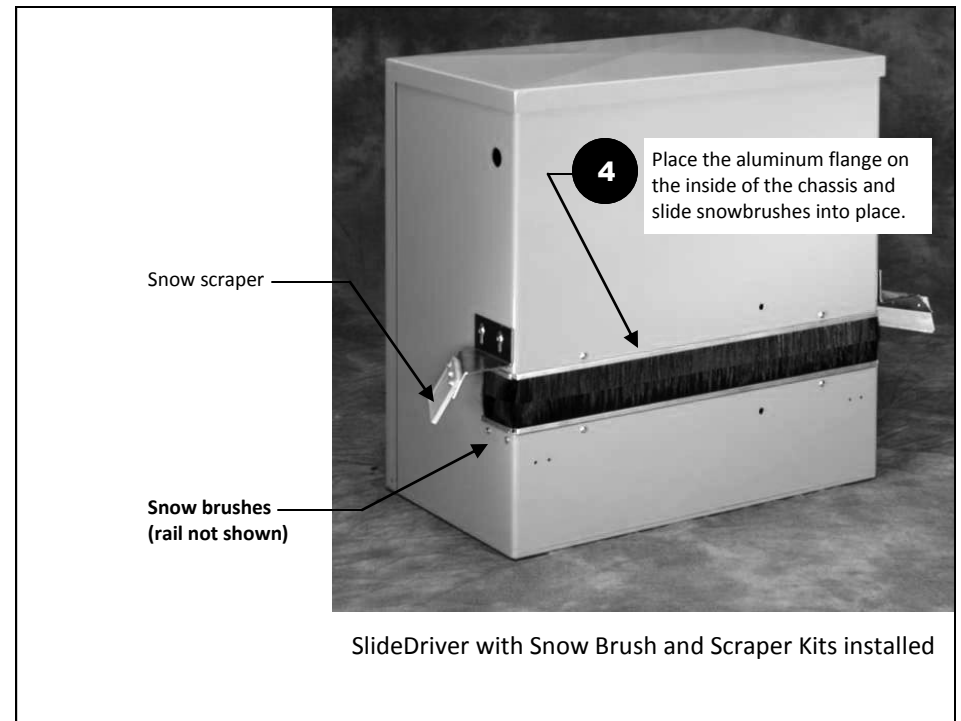
The snow brush and snow scraper kits help keep ice and snow buildup at a minimum along the drive rail of the SlideDriver gate operator. These instructions explain how to:

- Install snow brushes
- Install snow scrapers
- Prevent ice buildup on outside limit switch arms

NOTE: The snow brush and snow scraper kits can be ordered together or separately. These instructions explain the installation process.

Installing the Snow Brushes

1. Loosen the two Phillips-head screws that secure the cover to the SlideDriver chassis.
2. Remove the cover and set it on a level work surface.
3. Turn off the power to the operator using the power toggle switch, located on the Control Box.
4. Slide the snow brushes into place and secure them using the fasteners provided. The aluminum flange should be inside the operator. See photo and illustrations for proper mounting location.



5. Insert the mounting bolts through the chassis from the outside and attach the supplied washers and Nylock® nuts. Secure the fasteners using a crescent wrench and Phillips-head screwdriver. Refer to the illustrations.
6. Turn the power on.
7. Test the gate operator and make sure it functions properly.
8. Carefully, replace the cover and secure it to the chassis.

CAUTION

The front cover is heavy. As you replace it, be aware that you need to position your hands in such a way as to avoid pinching your fingers between the edge of the chassis and the cover.

Install the Snow Scrapers

To mount the plastic snow scrapers, refer to the photograph on page 1.

1. Follow steps 1 through 3 on page 1, *Install the Snow Brushes*.
2. Take note of the orientation of the right and left snow scrapers. Slide the brackets into place and adjust them so the scraper rests about 1/8-inch above the drive rail. Secure the bracket using the fasteners provided.
3. Follow steps 6 through 8 above.

Preventing Ice Buildup

On the SlideDriver 50VF2 and 50VF3 operators, limit switch arms are mounted on the outside of the SlideDriver chassis. On occasion, the arms can stick due to ice buildup and cause the drive rail to jam. If this type of incident occurs often, cut approximately 4-inches (10cm) off the ends of the lower brush as shown in the illustration. Pack the limit switches with silicone grease to help prevent ice buildup.

CORRECT installation of snowbrushes

Install the snow brushes so the aluminum flange is inside the chassis. Use the supplied washers and nuts to secure the fasteners.

