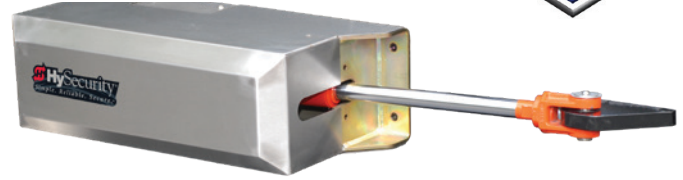


HydraSwing™



Industrial grade components



powered by **SmartTouch**

Technical Specifications

Model	HydraSwing 40	HydraSwing 40 Twin	HydraSwing 40F	HydraSwing 40F Twin	HydraSwing 80F	HydraSwing 150
Single or Twin	Single leaf	Twin (2 leaves)	Single leaf	Twin (2 leaves)	Single leaf	
Duty Cycle	Continuous					
Drive	VFD controlled Hydraulics					
Open/Close Time	15-20 seconds, field adjustable**		10-15 seconds, field adjustable**		15-25 seconds, field adjustable**	20-30 seconds, field adjustable**
Gate Length Max.	up to 24 ft (7.3 m)*	up to 16 ft (5 m) wide each leaf*	up to 16 ft (5 m) wide*	up to 16 ft (5 m) wide each leaf*	up to 30 ft (9 m) wide*	up to 40 ft (12 m) wide*
Gate Weight Max.	4,000 lb (1,814 kg)*	4,000 lb (1,814 kg) / leaf*	4,000 lb (1,814 kg)*	4,000 lb (1,814 kg) / leaf*	8,000 lb (3,629 kg)*	15,000 lb (6,804 kg)*
UPS Battery Backup Cycles	Optional 230V AC Power Supply w/HyInverter AC™***					
Temperature Rating	-40° to 158° F (-40° to 70° C)					
Single Phase Voltages	208/230V 50/60Hz, 208/230V 50/60Hz					
Three Phase Voltages	208/230V 50/60Hz or 380/460V 50/60Hz					
Communication	RS-232, RS-485					
User Controls	Smart Touch Controller with 70+ configurable settings. Smart Touch keypad and 32 character, OLED display or a PC using S.T.A.R.T. software.					
Relays	Three configurable user relays: one 30VDC, 3A solid state and two 250VAC, 10A electromechanical. Optional Hy8Relay™ for 8 additional relay outputs.					
Enclosure	Type 3R, 30w x 42h x 12d inch (76w x 107h x 30.5d cm)					
Finish	Zinc plated steel chassis with stainless steel cover				3/4 inch zinc plated steel chassis with black powder coated steel cover	
ETL Listed (UL 325)	Usage Class I, II, III, IV				Usage Class III, IV	
Warranty	5 year w/product registration					

* Gate length/weight specifications are dependent on height, percentage of open area on panel and anticipated wind speed.

** Actual open/close time dependent on gate weight/length, percentage of open area on panel and anticipated wind speed.

*** The operator's normal duty cycle and the actual number of gate cycles available from battery depends upon gate resistance to travel, cycle length, battery size, state of charge and health, ambient temperature, accessory power draw and frequency of gate cycles during power outage.



www.SecureOpeners.com

(888) 378 - 1127

Sales@SecureOpeners.com